



Updated Covid-19  
School Information  
November 2020

# YEAR 8

There are some important changes to the arrangements for after half term. Please read this leaflet carefully.

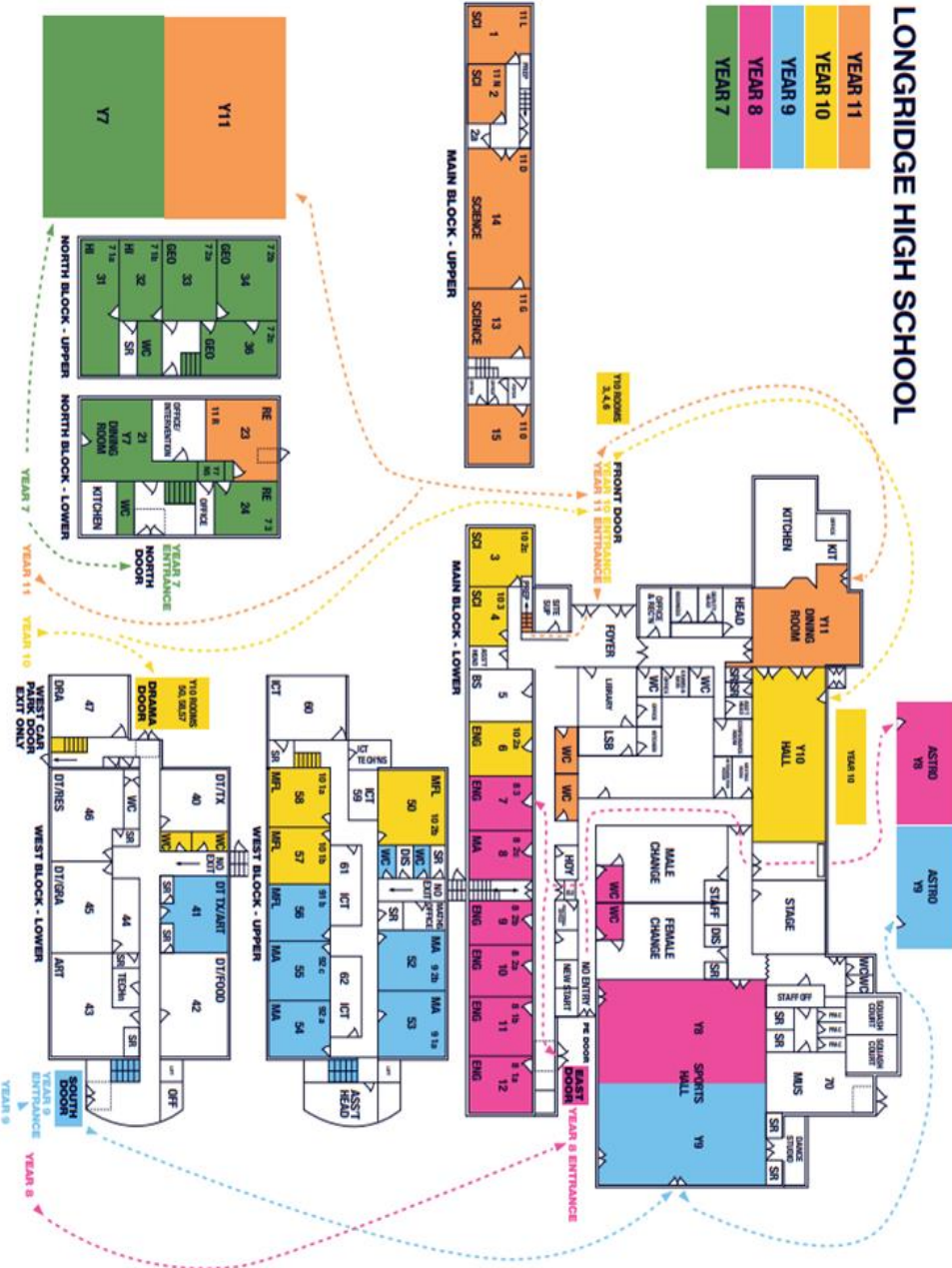
## IMPORTANT

From 2<sup>nd</sup> November 2020, all homework and classwork, if self-isolating, will be set using **School Synergy**. This means that **eSchools** WILL NOT be used for any form of communication for parents or pupils.

Parents should contact school using Synergy for all enquiries including attendance, appointments and support. The school's 'admin' email will no longer be available after this date.

Parents and pupils can access this by clicking on the tab 'School Synergy' on the school's website. Pupils should sign in using the Microsoft 365 link (school email and user name).

## LONGRIDGE HIGH SCHOOL



## Year 8 Information

Year 8 should enter by the **Sports Centre car park gate only**. You should gather and meet outside the East Door entrance.

You should enter and exit the main building using only the **East Doors** on the English corridor.

Your toilets are the PE toilets by the Pastoral Office.

## Break and Lunchtime

Your outside area is half of the Astro pitch furthest away from St Cecilia's. You must enter and exit the Astro by the far gate nearest the rocks/netball courts. Do not cross over in to the other section of the Astro at any time. Your food is served in the Sports Hall – the half nearest the Pastoral Office. Enter and exit using the internal fire doors. You can eat packed lunches here as well as food bought from school. We are unable to provide a water refilling station. To access the Astro, you must walk through the PE corridor and through the main hall, using the fire doors.

## Fire Assembly point

The designated area is the front of the yard nearest the dairy. Line up in alphabetical order in form order (Maths Sets).

## End of day

All pupils will be dismissed from lessons at 3pm. This is the same for walkers or pupils catching public transport/lifts.

You must leave by the main gates/entrance only.

## Number 1 bus queue

In front of West Block.

## Year 8 Anchor Rooms

From Monday 2<sup>nd</sup> November, Year 8 will register and have lessons in Rooms 7,8,9,10,11 and 12.

Y8 Anchor group	Reg tutor	Anchor room
Y8 Ma 1a	Miss Hudson	12
Y8 Ma 1b	Mrs Dyson-Knight	11
Y8 Ma 2a	Mr Kershaw	10
Y8 Ma 2b	Mr Ball	9
Y8 Ma 2c	Mrs Graves	8
Y8 Ma 3	Mr Coates	7

## In Classrooms

- You will be taught in different sets and classrooms for English and Science. Other subjects will be taught in the Maths' sets in your anchor room. ICT lessons will take place in computer rooms. You will be collected from and returned to the anchor room by your ICT teacher.
- Make sure you always sit in your allocated seat.
- Keep your exercise books in your teaching rooms. (Don't take them home unless asked to do so.)
- Make sure you keep your exercise books in the correct pile in the classroom.
- Organise all your marked work in your Folder of Excellence under the correct subject heading.
- Bring your writing equipment/homework/pupil planner with you every day.
- Return all equipment to the resource area when you have finished with it – glue/scissors/colouring pens/whiteboards.
- Make sure your desk and floor area are neat and tidy at the end of the school day.

**You must not enter another zone in the school.**